

AENC-TQST-LAN-DWG-0002

Norwich to Tilbury

Volume 2: Plans, Drawings and Sections

**Document: 2.2 Land Plans - Section H
- Clean Version**

Final Issue D

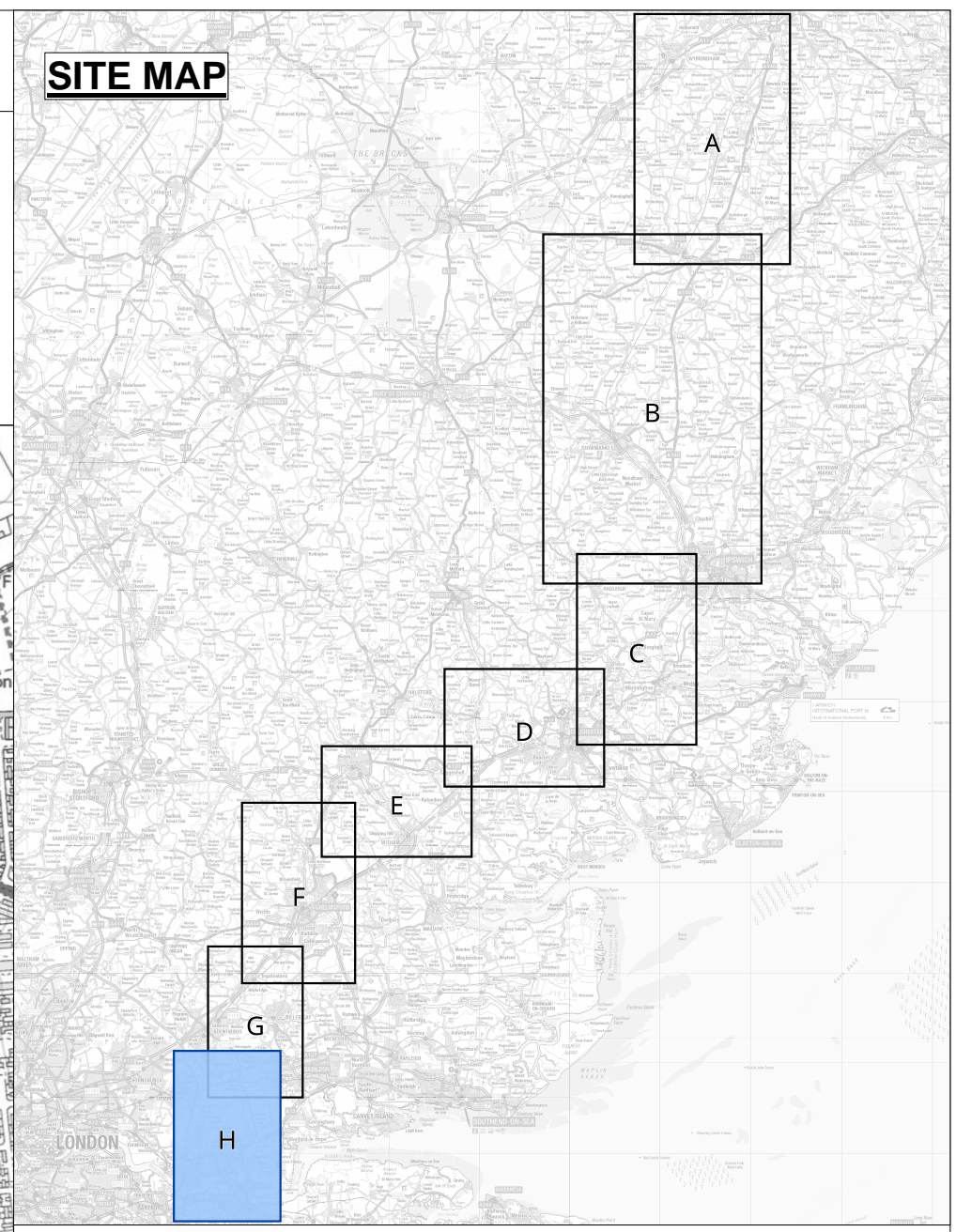
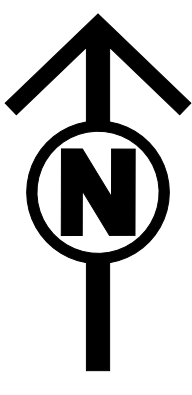
June 2026

Planning Inspectorate Reference: EN020027

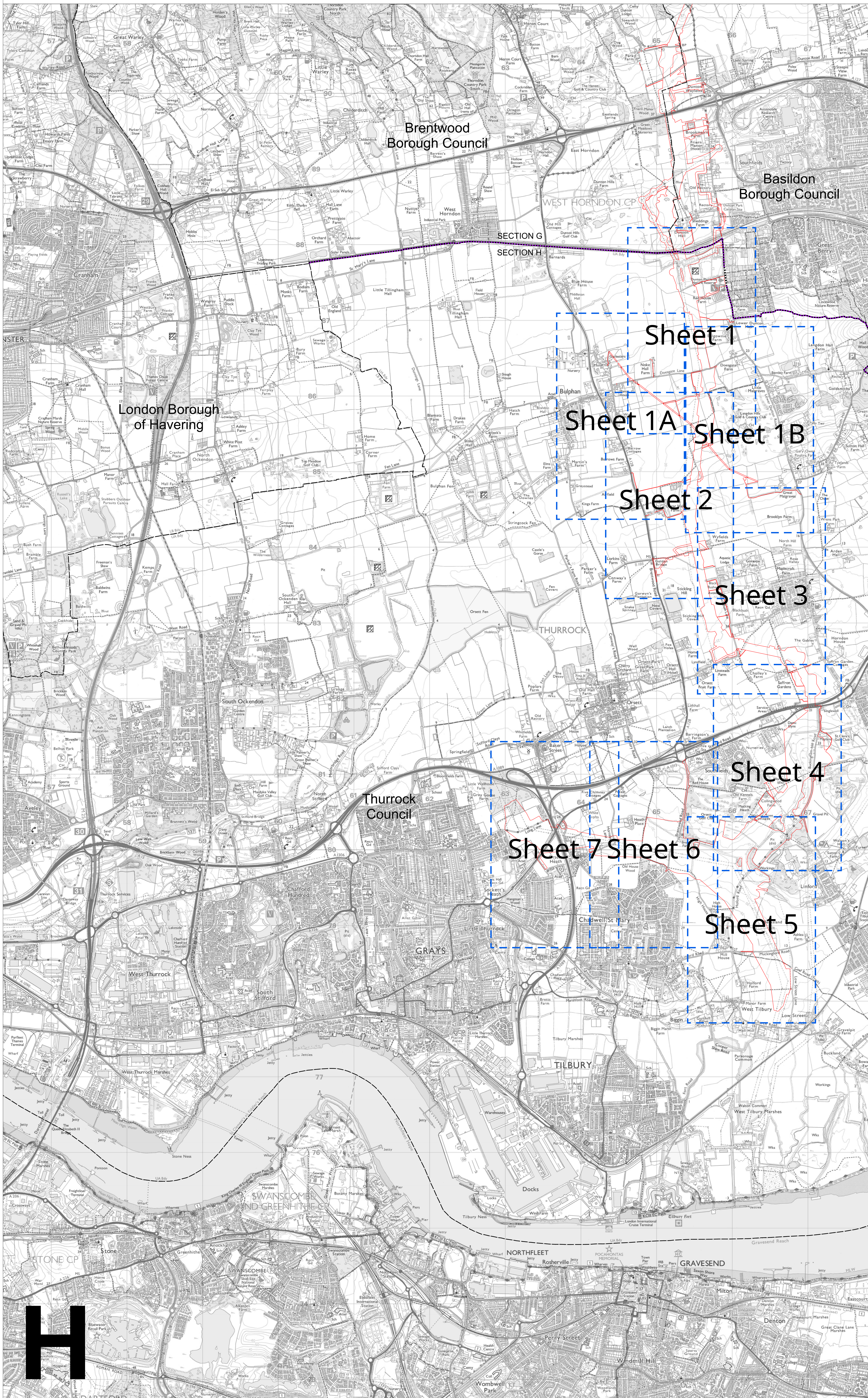
Infrastructure Planning (Applications: Prescribed Forms and Procedure)
Regulations 2009 Regulation 5(2)(i)(i)-(iii)

nationalgrid

THE NATIONAL GRID (NORWICH TO TILBURY) ORDER
 LAND PLANS KEY PLAN
 REGULATION 5(2)(i)-(iii)
 SECTION H (SHEET 1 OF 1,
 BRENTWOOD BOROUGH COUNCIL, BASILDON BOROUGH COUNCIL AND THURROCK COUNCIL)



- Legend**
- Local authority boundary
 - Section boundary & local authority boundary
 - Section boundary
 - Sheet Index
 - Order Limits



- Notes**
1. For additional detail on the plan suites, please refer to the Guide to Plans (document reference 2.0), located in the Volume 2 of the DCO application.
 2. This drawing is scaled at paper size A0, therefore any prints taken at smaller sizes will affect accuracy of the measurement units and should not be scaled against.

Coordinate System: British National Grid
 Sheet X Centroid Coordinate : 562094 Sheet Y Centroid Coordinate : 181950

BACKGROUND MAPPING INFORMATION HAS BEEN REPRODUCED FROM THE ORDNANCE SURVEY BY PERMISSION OF ORDNANCE SURVEY OF THE CONTROLLER OF HIS MAJESTY'S STATIONERY OFFICE. © CROWN COPYRIGHT AND DATABASE RIGHTS(2025) LICENCE OS100024241 AND AC0000807946.

Issue	Date	Remarks	Drawn	Checked	Approved
D	JUN-2026	For deadline five	CLJ	RCA	KPA
C	MAY-2026	For deadline four	CLJ	RCA	KPA
B	OCT-2025	October 2025 Update	CLJ	AMI	TPR
A	AUG-2025	For DCO Submission	CLJ	KPA	TPR

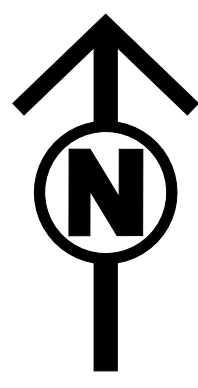
Title:
 THE NATIONAL GRID (NORWICH TO TILBURY) ORDER
 LAND PLANS KEY PLAN
 REGULATION 5(2)(i)-(iii)
 SECTION H (SHEET 1 OF 1,
 BRENTWOOD BOROUGH COUNCIL,
 BASILDON BOROUGH COUNCIL,
 AND THURROCK COUNCIL)

nationalgrid

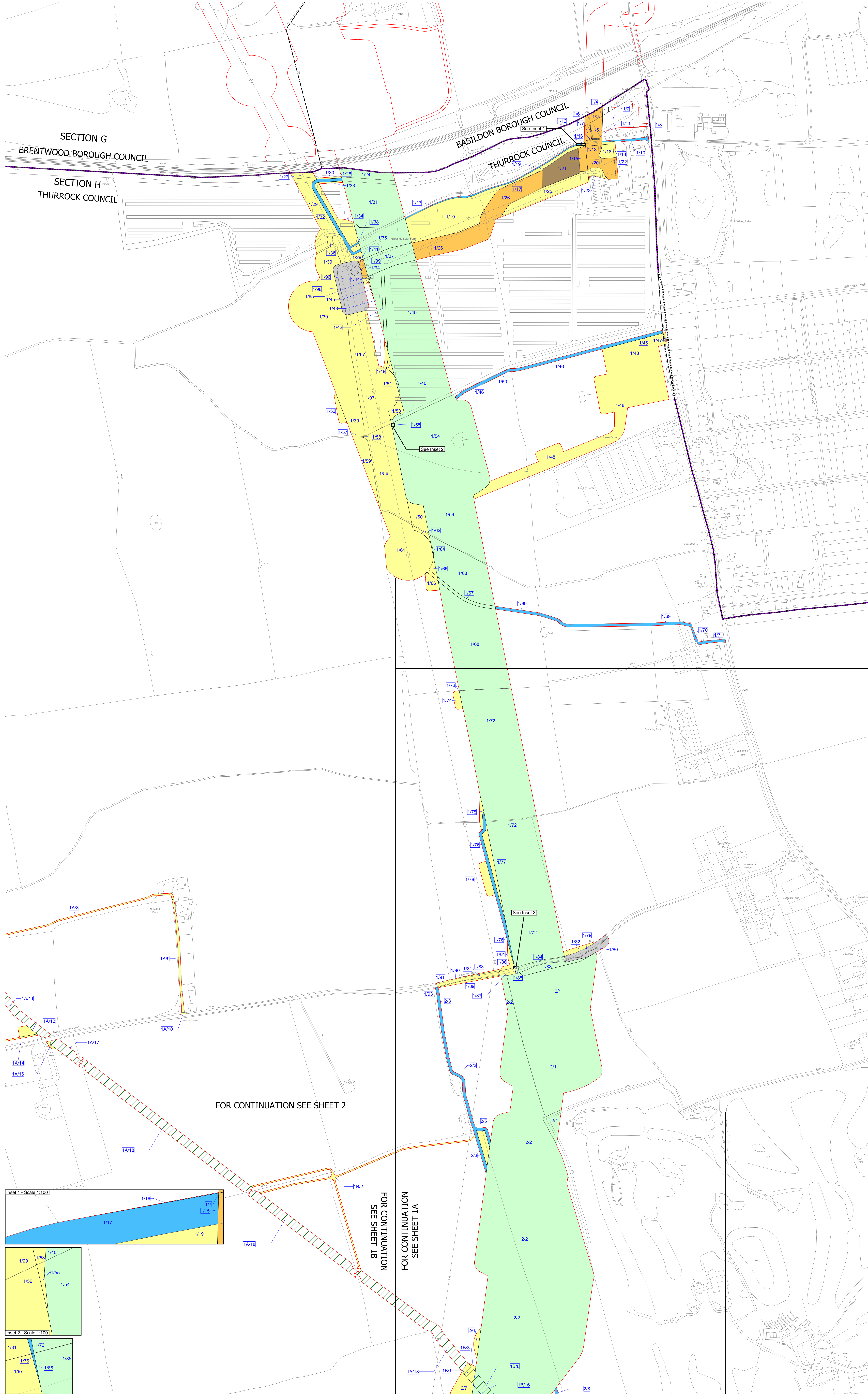
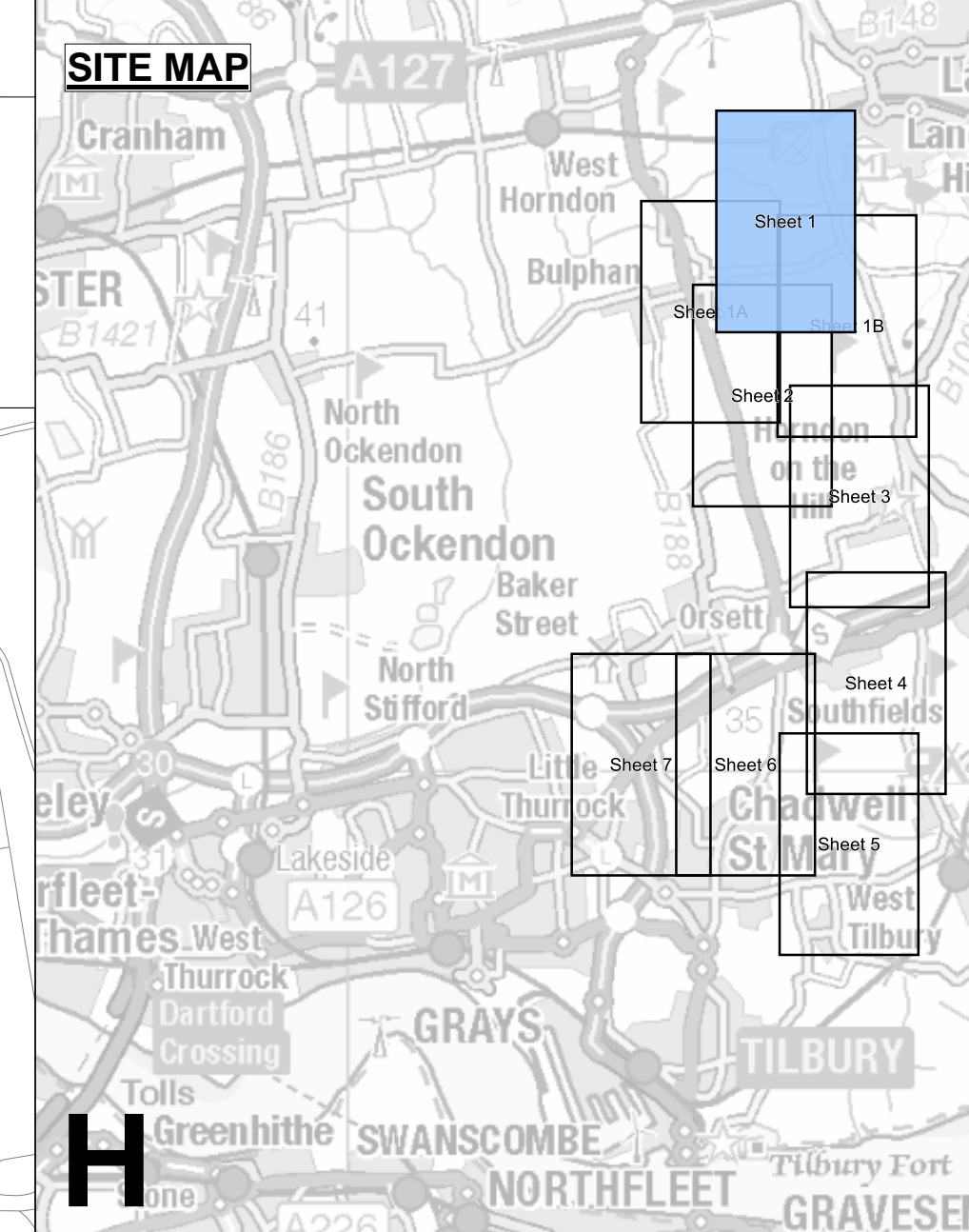
PINS Application Number: EN020027

National Grid Drawing Reference: AENC-TQST-LAN-DWG-0002

Scale	Sheet Size	Sheet	Issue
1:17,000	A0	SHEET 1 of 1	D



LAND PLANS
REGULATION 5(2)(i)-(iii)
SECTION H (SHEET 1 OF 7,
BRENTWOOD BOROUGH COUNCIL, BASILDON BOROUGH COUNCIL AND THURROCK COUNCIL)



- Legend**
- Local authority boundary
 - Section boundary & local authority boundary
 - Section boundary
 - Sheet index cutlines
 - Order Limits
 - Class 1 - Compulsory acquisition of land
 - Class 2 - Compulsory acquisition of rights - Overhead line
 - Class 3 - Compulsory acquisition of rights - Underground cable system
 - Class 4 - Compulsory acquisition of rights - Overhead line and underground cable system
 - Class 4A - Compulsory Acquisition of Rights - Works for the protection of existing UKOP apparatus affected by the authorised development
 - Class 5 - Compulsory acquisition of rights - Access
 - Class 6 - Compulsory acquisition of rights - Drainage
 - Class 7 - Temporary use
 - Class 8 - Land not subject to powers of acquisition nor temporary use

Notes

- For additional detail on the plan suites, please refer to the Guide to Plans (document reference 2.0), located in the Volume 2 of the DCO application.
- This drawing is scaled at paper size A0, therefore any prints taken at smaller sizes will affect accuracy of the measurement units and should not be scaled against.

Coordinate System: British National Grid
 Sheet X Centroid Coordinate: 565465 Sheet Y Centroid Coordinate: 166862

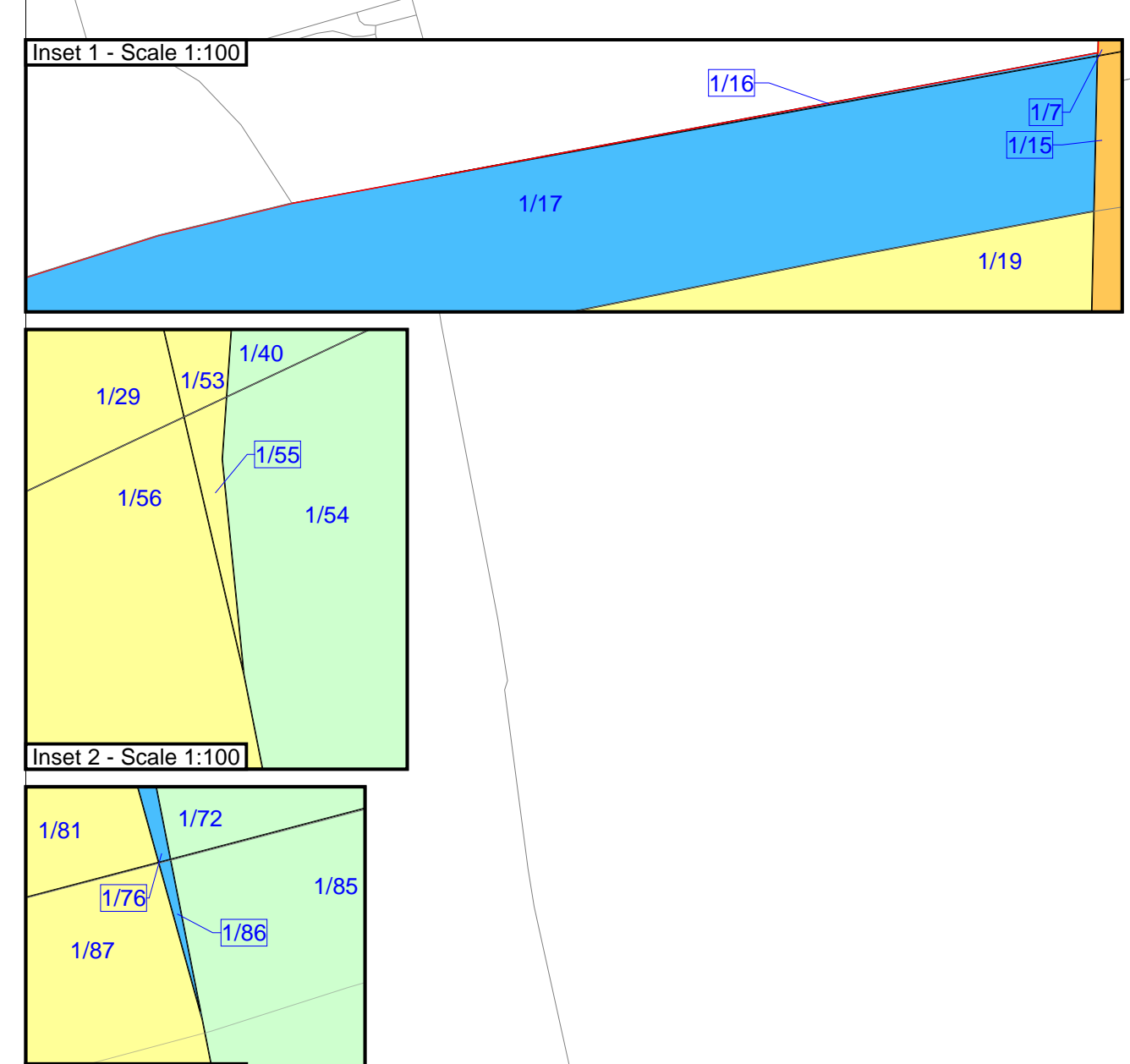
0 50 100 150 200 250 Metres

BACKGROUND MAPPING INFORMATION HAS BEEN REPRODUCED FROM THE ORDNANCE SURVEY BY PERMISSION OF ORDNANCE SURVEY OF THE CONTROLLER OF HIS MAJESTY'S STATIONERY OFFICE. © CROWN COPYRIGHT AND DATABASE RIGHTS (2025) LICENCE OS100024241 AND AC0000807948.

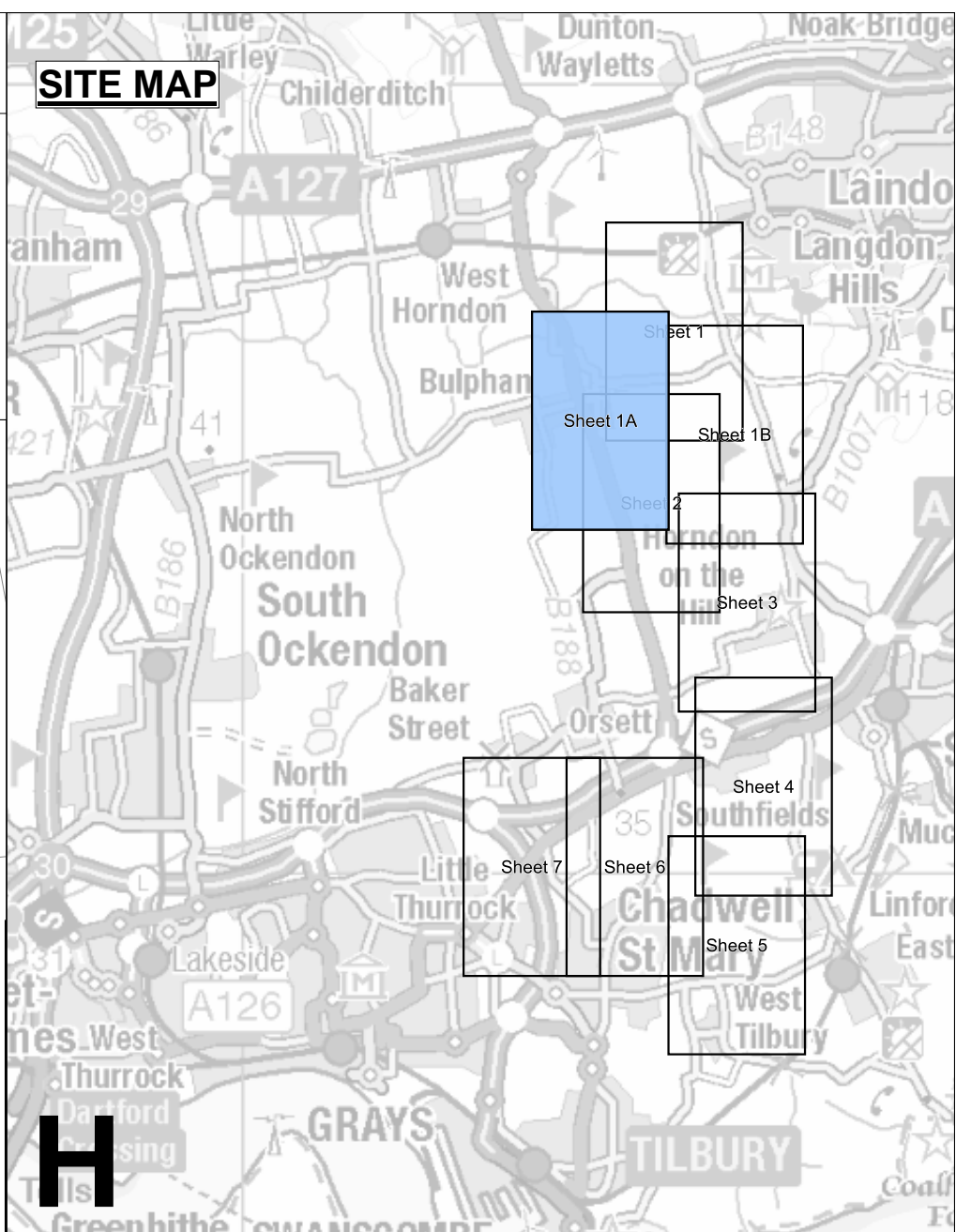
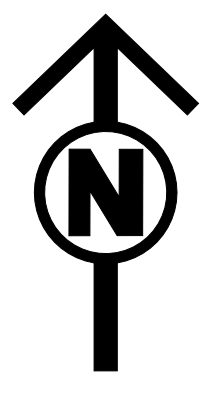
Issue	Date	Remarks	Drawn	Checked	Approved
D	JUN-2026	For deadline five	CLJ	RCA	KPA
C	MAY-2026	For deadline four	CLJ	RCA	KPA
B	OCT-2025	October 2025 Update	BBU	AMI	CLJ
A	AUG-2025	For DCO Submission	BBU	KGA	CLJ

Title: THE NATIONAL GRID (NORWICH TO TILBURY) ORDER
 LAND PLANS
 REGULATION 5(2)(i)-(iii)
 SECTION H (SHEET 1 OF 7,
 BRENTWOOD BOROUGH COUNCIL,
 BASILDON BOROUGH COUNCIL
 AND THURROCK COUNCIL)

nationalgrid			
PINS Application Number EN020027			
National Grid Drawing Reference AENC-TQST-LAN-DWG-0002			
Scale 1:2,500	Sheet Size A0	Sheet SHEET 1 OF 7	Issue D

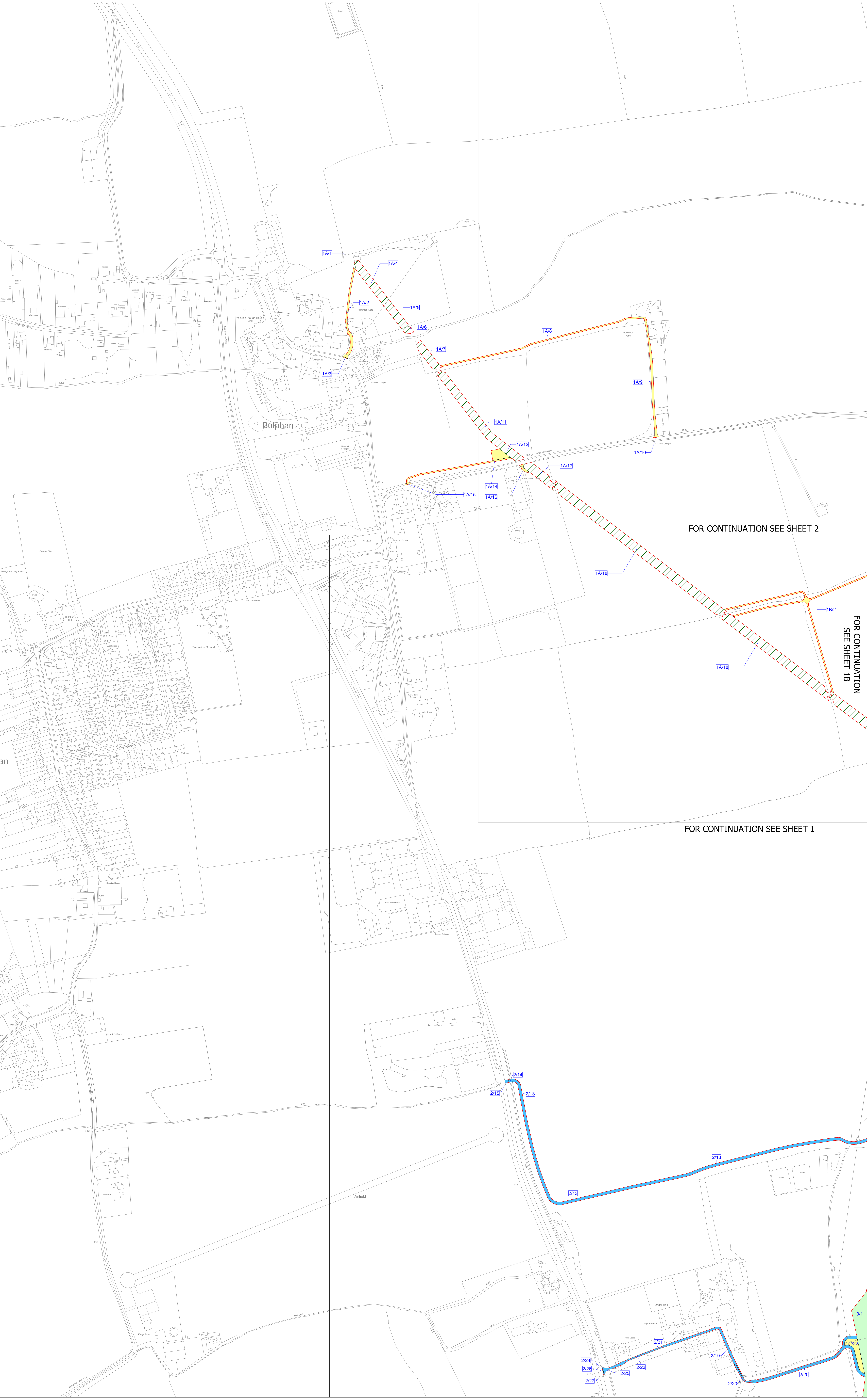


THE NATIONAL GRID (NORWICH TO TILBURY) ORDER
 LAND PLANS
 REGULATION 5(2)(i)-(iii)
 SECTION H (SHEET 1A OF 7,
 THURROCK COUNCIL)



H

- Legend**
- Local authority boundary
 - Section boundary & local authority boundary
 - Section boundary
 - Sheet index cutlines
 - Order Limits
 - Class 1 - Compulsory acquisition of land
 - Class 2 - Compulsory acquisition of rights - Overhead line
 - Class 3 - Compulsory acquisition of rights - Underground cable system
 - Class 4 - Compulsory acquisition of rights - Overhead line and underground cable system
 - Class 4A - Compulsory Acquisition of Rights - Works for the protection of existing UKOP apparatus affected by the authorised development
 - Class 5 - Compulsory acquisition of rights - Access
 - Class 6 - Compulsory acquisition of rights - Drainage
 - Class 7 - Temporary use
 - Class 8 - Land not subject to powers of acquisition nor temporary use



FOR CONTINUATION SEE SHEET 2

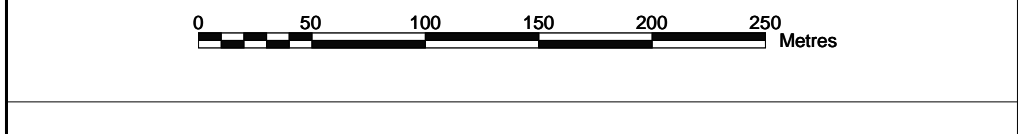
FOR CONTINUATION SEE SHEET 1

FOR CONTINUATION
SEE SHEET 1B

Notes

1. For additional detail on the plan suites, please refer to the Guide to Plans (document reference 2.0), located in the Volume 2 of the DCO application.
2. This drawing is scaled at paper size A0, therefore any prints taken at smaller sizes will affect accuracy of the measurement units and should not be scaled against.

Coordinate System: British National Grid
 Sheet X Centroid Coordinate: 564525 Sheet Y Centroid Coordinate: 165732



BACKGROUND MAPPING INFORMATION HAS BEEN REPRODUCED FROM THE ORDNANCE SURVEY BY PERMISSION OF THE CONTROLLER OF HIS MAJESTY'S STATIONERY OFFICE. © CROWN COPYRIGHT AND DATABASE RIGHTS (2025) LICENCE OS100024241 AND AC0000807948.

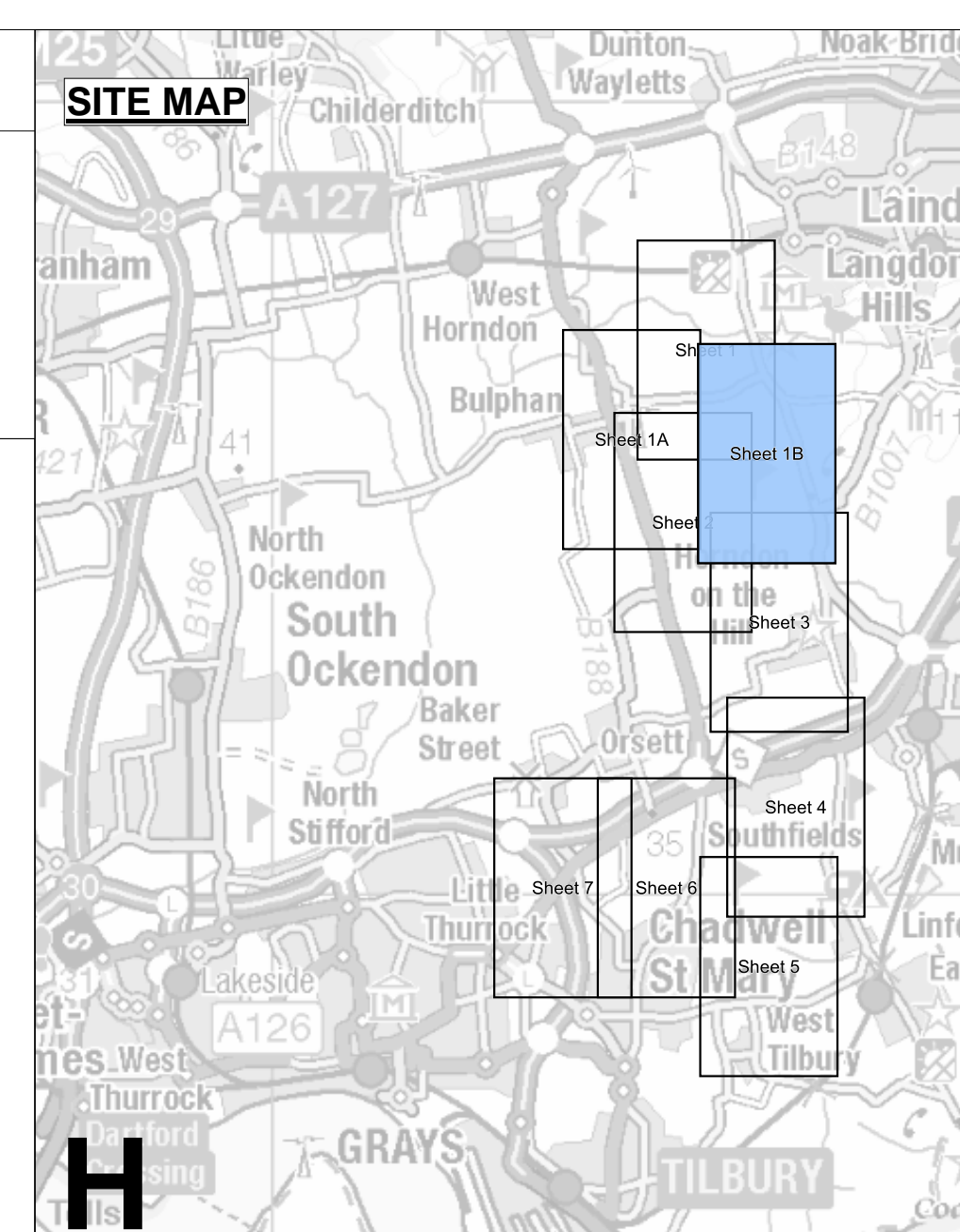
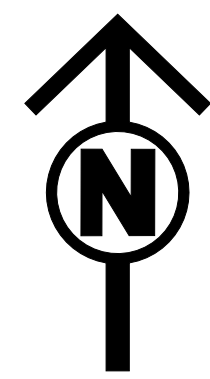
D	JUN-2026	For deadline five	CLJ	RCA	KPA
C	MAY-2026	For deadline four	CLJ	RCA	KPA
B	OCT-2025	October 2025 Update	BBU	AMI	CLJ
A	AUG-2025	For DCO Submission	BBU	KGA	CLJ
Issue	Date	Remarks	Drawn	Checked	Approved

Title:
 THE NATIONAL GRID
 (NORWICH TO TILBURY) ORDER
 LAND PLANS
 REGULATION 5(2)(i)-(iii)
 SECTION H (SHEET 1A OF 7,
 THURROCK COUNCIL)

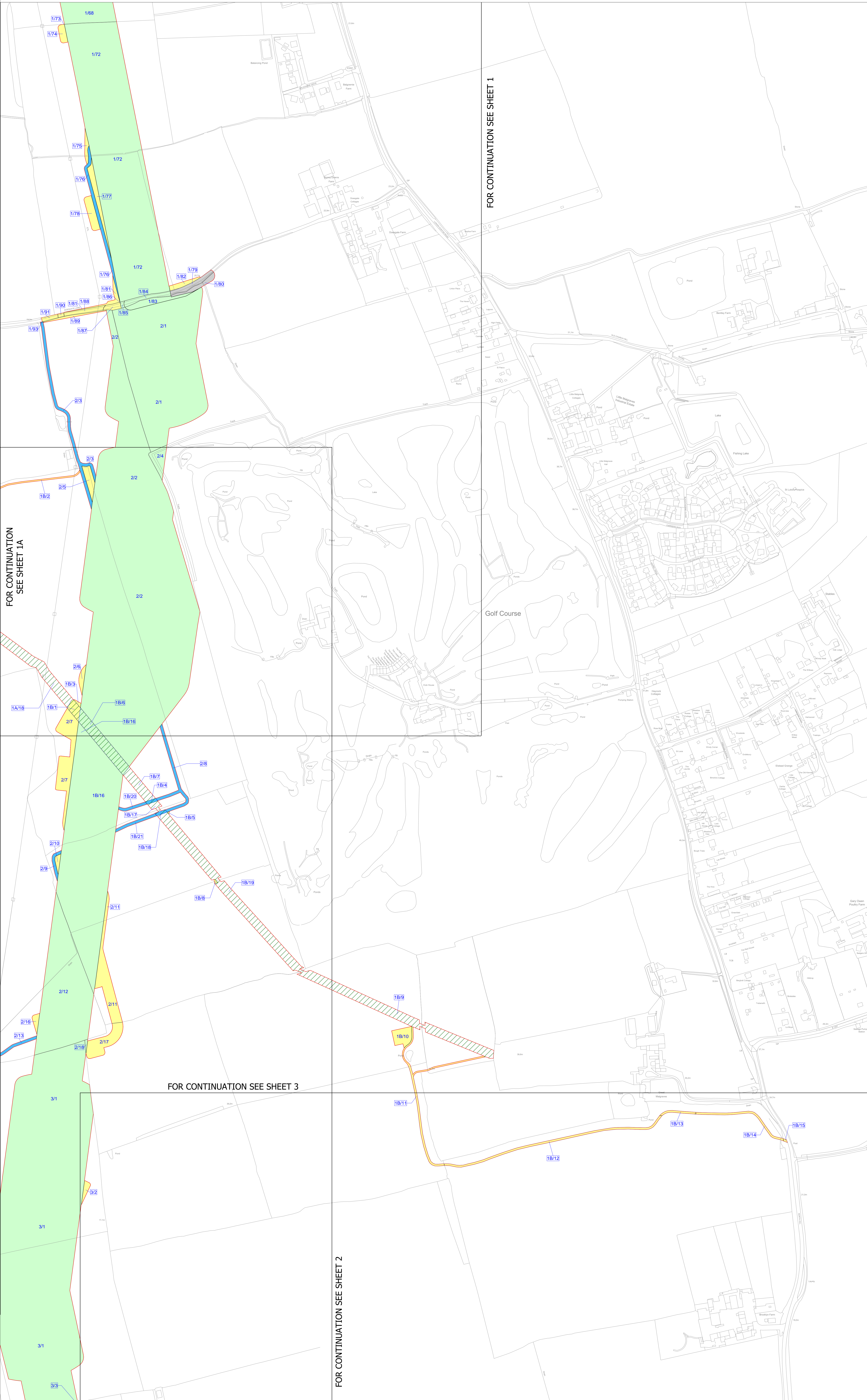
nationalgrid			
PINS Application Number EN020027			
National Grid Drawing Reference AENC-TQST-LAN-DWG-0002			
Scale 1:2,500	Sheet Size A0	Sheet SHEET 1A OF 7	Issue D

THE NATIONAL GRID (NORWICH TO TILBURY) ORDER
 LAND PLANS
 REGULATION 5(2)(i)-(iii)
 SECTION H (SHEET 1B OF 7,
 THURROCK COUNCIL)

Application Document 2.2



- Legend**
- Local authority boundary
 - Section boundary & local authority boundary
 - Section boundary
 - Sheet index cutlines
 - Order Limits
 - Class 1 - Compulsory acquisition of land
 - Class 2 - Compulsory acquisition of rights - Overhead line
 - Class 3 - Compulsory acquisition of rights - Underground cable system
 - Class 4 - Compulsory acquisition of rights - Overhead line and underground cable system
 - Class 4A - Compulsory Acquisition of Rights - Works for the protection of existing UKOP apparatus affected by the authorised development
 - Class 5 - Compulsory acquisition of rights - Access
 - Class 6 - Compulsory acquisition of rights - Drainage
 - Class 7 - Temporary use
 - Class 8 - Land not subject to powers of acquisition nor temporary use



FOR CONTINUATION SEE SHEET 1A

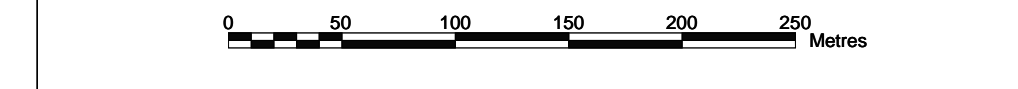
FOR CONTINUATION SEE SHEET 1

FOR CONTINUATION SEE SHEET 3

FOR CONTINUATION SEE SHEET 2

- Notes**
- For additional detail on the plan suites, please refer to the Guide to Plans (document reference 2.0), located in the Volume 2 of the DCO application.
 - This drawing is scaled at paper size A0, therefore any prints taken at smaller sizes will affect accuracy of the measurement units and should not be scaled against.

Coordinate System: British National Grid
 Sheet X Centroid Coordinate: 566230 Sheet Y Centroid Coordinate: 165555



BACKGROUND MAPPING INFORMATION HAS BEEN REPRODUCED FROM THE ORDNANCE SURVEY BY PERMISSION OF ORDNANCE SURVEY OF THE CONTROLLER OF HIS MAJESTY'S STATIONERY OFFICE. © CROWN COPYRIGHT AND DATABASE RIGHTS (2025) LICENCE OS100024241 AND AC0000807948.

Issue	Date	Remarks	Drawn	Checked	Approved
D	JUN-2026	For deadline five	CLJ	RCA	KPA
C	MAY-2026	For deadline four	CLJ	RCA	KPA
B	OCT-2025	October 2025 Update	BBU	AMI	CLJ
A	AUG-2025	For DCO Submission	BBU	KGA	CLJ

Title:
 THE NATIONAL GRID
 (NORWICH TO TILBURY) ORDER
 LAND PLANS
 REGULATION 5(2)(i)-(iii)
 SECTION H (SHEET 1B OF 7,
 THURROCK COUNCIL)

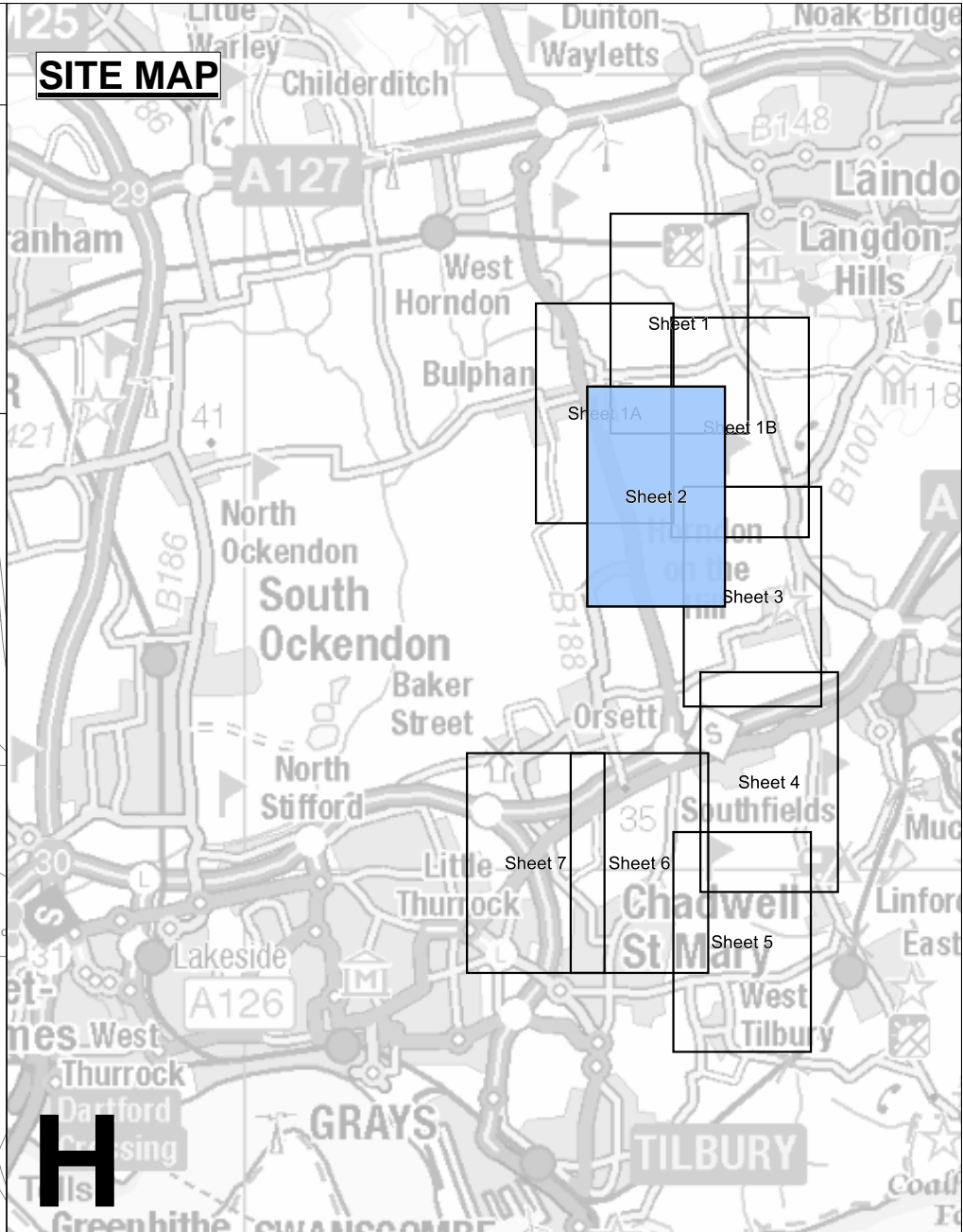
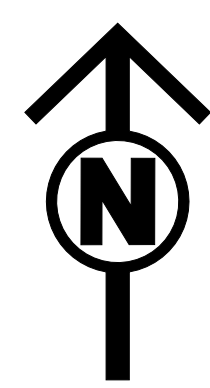
nationalgrid

PINS Application Number
 EN020027

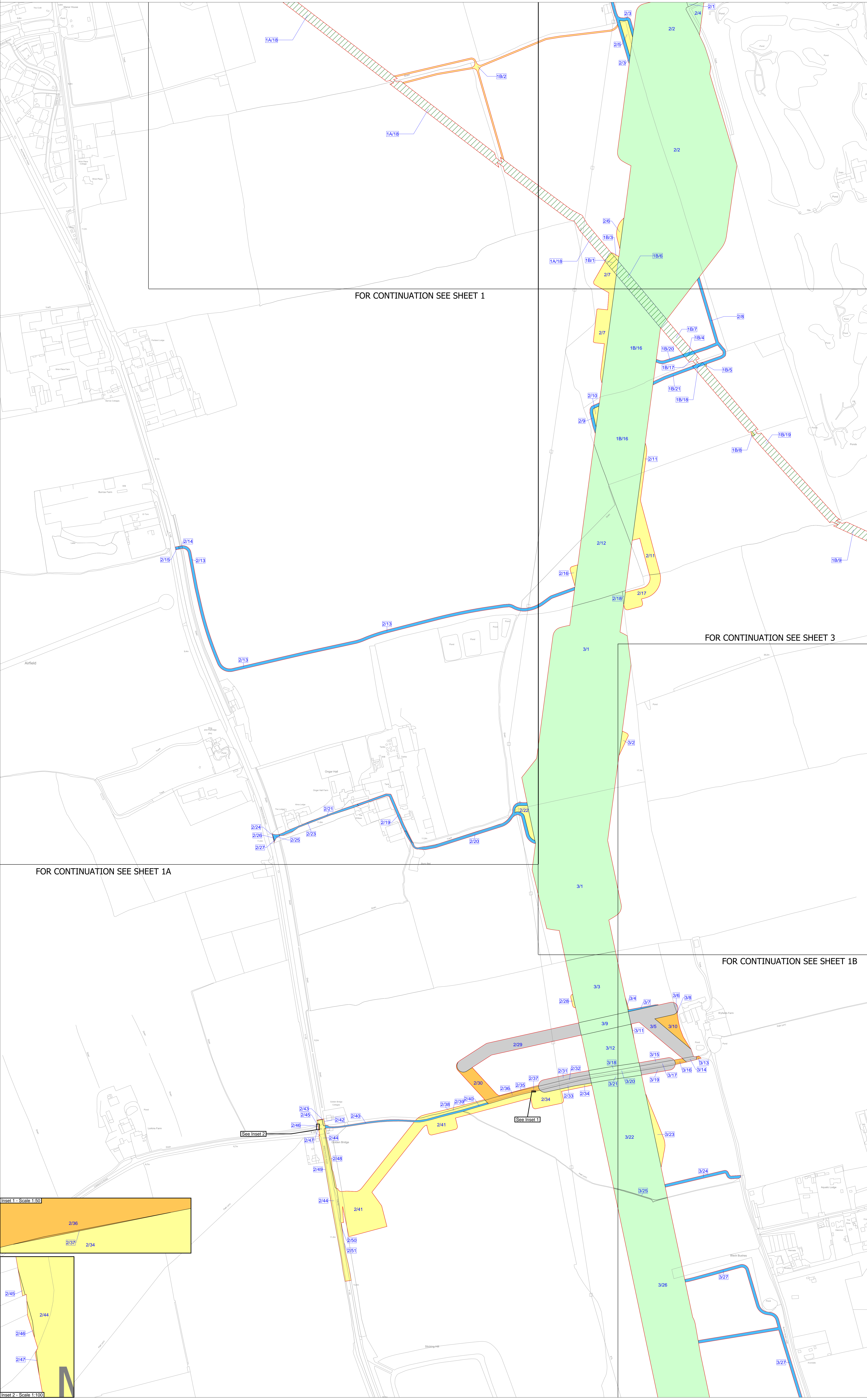
National Grid Drawing Reference
 AENC-TQST-LAN-DWG-0002

Scale	Sheet Size	Sheet	Issue
1:2,500	A0	SHEET 1B OF 7	D

THE NATIONAL GRID (NORWICH TO TILBURY) ORDER
 LAND PLANS
 REGULATION 5(2)(i)-(iii)
 SECTION H (SHEET 2 OF 7,
 THURROCK COUNCIL)



- Legend**
- Local authority boundary
 - Section boundary & local authority boundary
 - Section boundary
 - Sheet index cutlines
 - Order Limits
 - Class 1 - Compulsory acquisition of land
 - Class 2 - Compulsory acquisition of rights - Overhead line
 - Class 3 - Compulsory acquisition of rights - Underground cable system
 - Class 4 - Compulsory acquisition of rights - Overhead line and underground cable system
 - Class 4A - Compulsory Acquisition of Rights - Works for the protection of existing UKOP apparatus affected by the authorised development
 - Class 5 - Compulsory acquisition of rights - Access
 - Class 6 - Compulsory acquisition of rights - Drainage
 - Class 7 - Temporary use
 - Class 8 - Land not subject to powers of acquisition nor temporary use



- Notes**
1. For additional detail on the plan suites, please refer to the Guide to Plans (document reference 2.0), located in the Volume 2 of the DCO application.
 2. This drawing is scaled at paper size A0, therefore any prints taken at smaller sizes will affect accuracy of the measurement units and should not be scaled against.

Coordinate System: British National Grid
 Sheet X Centroid Coordinate: 565173 Sheet Y Centroid Coordinate: 164665

Scale: 0 50 100 150 200 250 Metres

BACKGROUND MAPPING INFORMATION HAS BEEN REPRODUCED FROM THE ORDNANCE SURVEY BY PERMISSION OF THE CONTROLLER OF HIS MAJESTY'S STATIONERY OFFICE. © CROWN COPYRIGHT AND DATABASE RIGHTS (2025) LICENCE OS100024241 AND AC0000807948.

Issue	Date	Remarks	Drawn	Checked	Approved
D	JUN-2026	For deadline five	CLJ	RCA	KPA
C	MAY-2026	For deadline four	CLJ	RCA	KPA
B	OCT-2025	October 2025 Update	BBU	AMI	CLJ
A	AUG-2025	For DCO Submission	BBU	KGA	CLJ

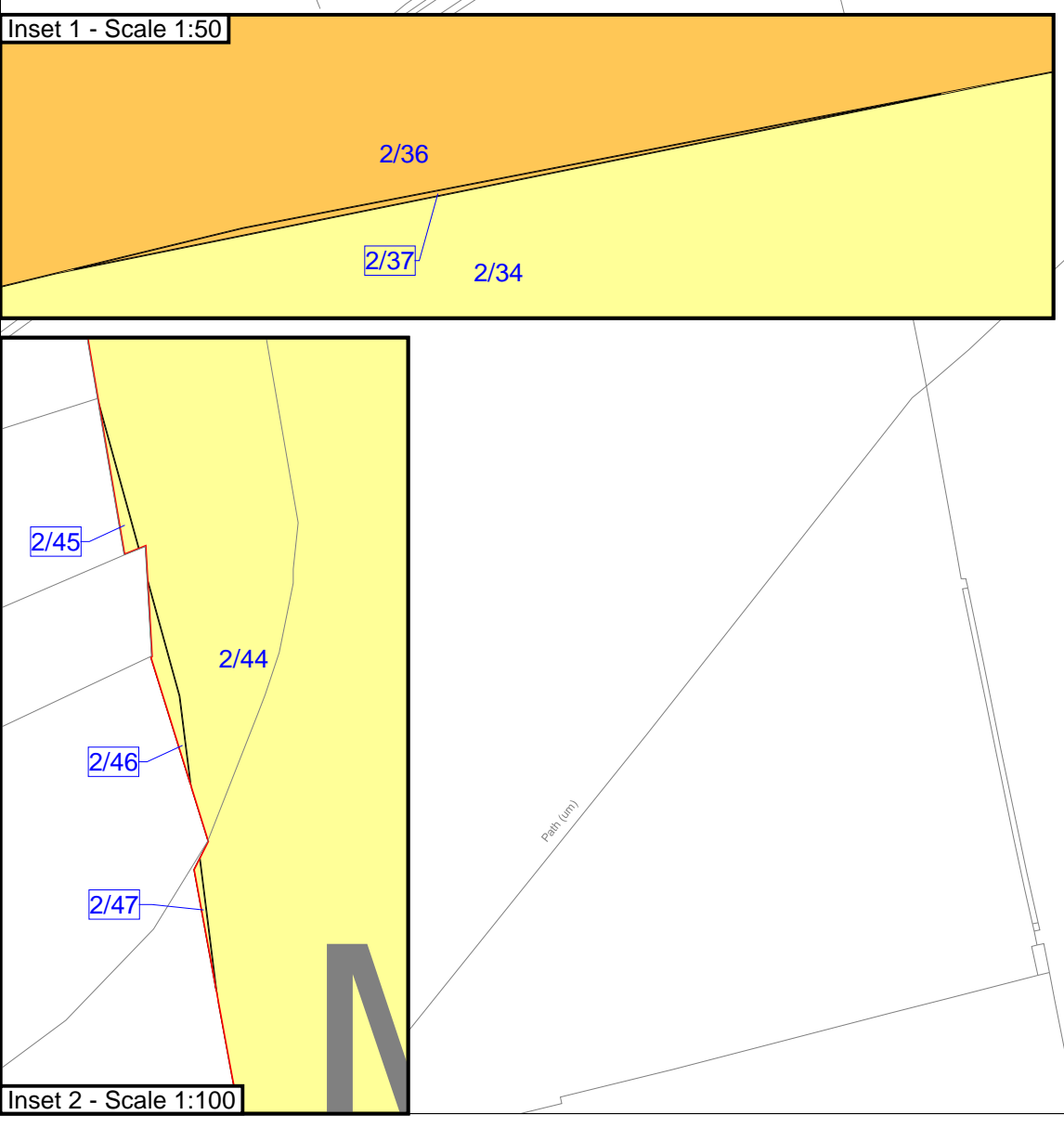
Title:
 THE NATIONAL GRID (NORWICH TO TILBURY) ORDER
 LAND PLANS
 REGULATION 5(2)(i)-(iii)
 SECTION H (SHEET 2 OF 7,
 THURROCK COUNCIL)

nationalgrid

PINS Application Number
 EN020027

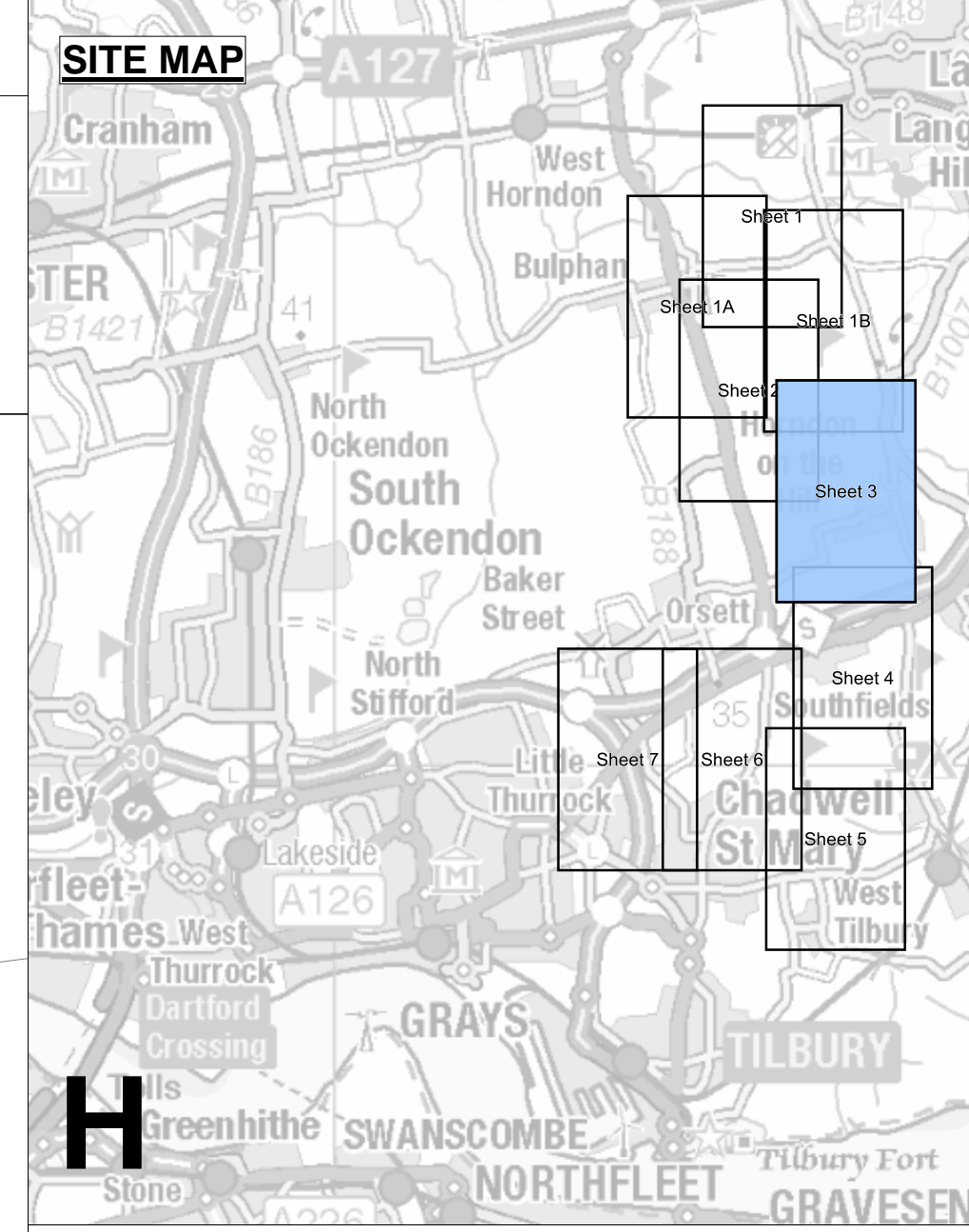
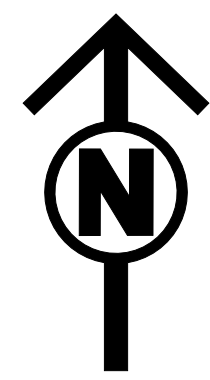
National Grid Drawing Reference
 AENC-TQST-LAN-DWG-0002

Scale	Sheet Size	Sheet	Issue
1:2,500	A0	SHEET 2 OF 7	D

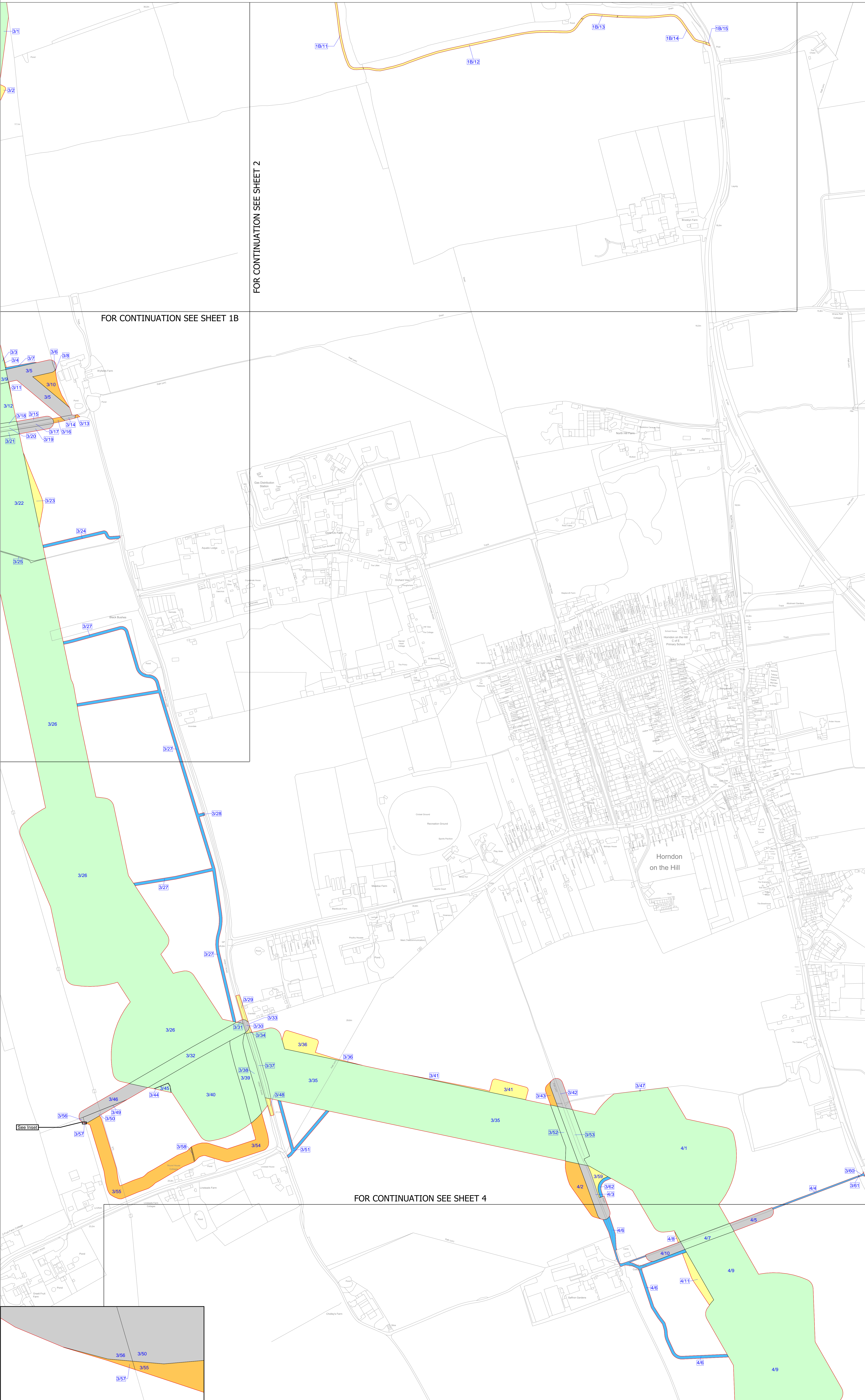


THE NATIONAL GRID (NORWICH TO TILBURY) ORDER
 LAND PLANS
 REGULATION 5(2)(i)-(iii)
 SECTION H (SHEET 3 OF 7,
 THURROCK COUNCIL)

Application Document 2.2



- Legend**
- Local authority boundary
 - Section boundary & local authority boundary
 - Section boundary
 - Sheet index cutlines
 - Order Limits
 - Class 1 - Compulsory acquisition of land
 - Class 2 - Compulsory acquisition of rights - Overhead line
 - Class 3 - Compulsory acquisition of rights - Underground cable system
 - Class 4 - Compulsory acquisition of rights - Overhead line and underground cable system
 - Class 4A - Compulsory Acquisition of Rights - Works for the protection of existing UKOP apparatus affected by the authorised development
 - Class 5 - Compulsory acquisition of rights - Access
 - Class 6 - Compulsory acquisition of rights - Drainage
 - Class 7 - Temporary use
 - Class 8 - Land not subject to powers of acquisition nor temporary use



Notes

- For additional detail on the plan suites, please refer to the Guide to Plans (document reference 2.0), located in the Volume 2 of the DCO application.
- This drawing is scaled at paper size A0, therefore any prints taken at smaller sizes will affect accuracy of the measurement units and should not be scaled against.

Coordinate System: British National Grid
 Sheet X Centroid Coordinate : 566387 Sheet Y Centroid Coordinate : 183424

0 50 100 150 200 250 Metres

BACKGROUND MAPPING INFORMATION HAS BEEN REPRODUCED FROM THE ORDINANCE SURVEY BY PERMISSION OF ORDINANCE SURVEY OF THE CONTROLLER OF HIS MAJESTY'S STATIONERY OFFICE. © CROWN COPYRIGHT AND DATABASE RIGHTS(2025) LICENCE OS100024241 AND AG000807946.

Issue	Date	Remarks	Drawn	Checked	Approved
D	JUN-2026	For deadline five	CLJ	RCA	KPA
C	MAY-2026	For deadline four	CLJ	RCA	KPA
B	OCT-2025	October 2025 Update	KRO	AMI	CLJ
A	AUG-2025	For DCO Submission	KRO	KGA	CLJ

Title:
 THE NATIONAL GRID (NORWICH TO TILBURY) ORDER
 LAND PLANS
 REGULATION 5(2)(i)-(iii)
 SECTION H (SHEET 3 OF 7
 THURROCK COUNCIL)

nationalgrid

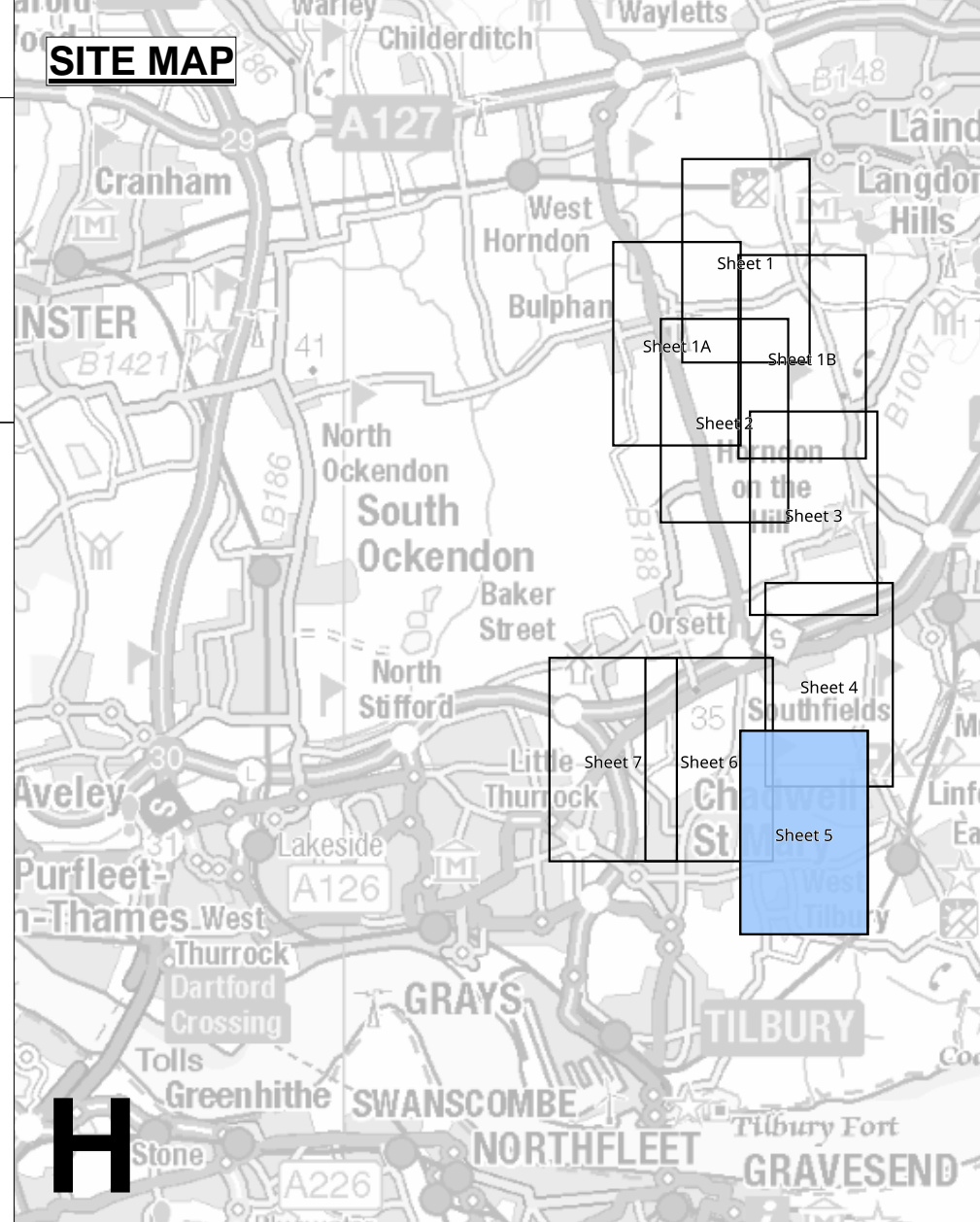
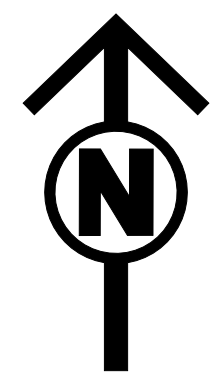
PINS Application Number
 EN020027

National Grid Drawing Reference
 AENC-TQST-LAN-DWG-0002

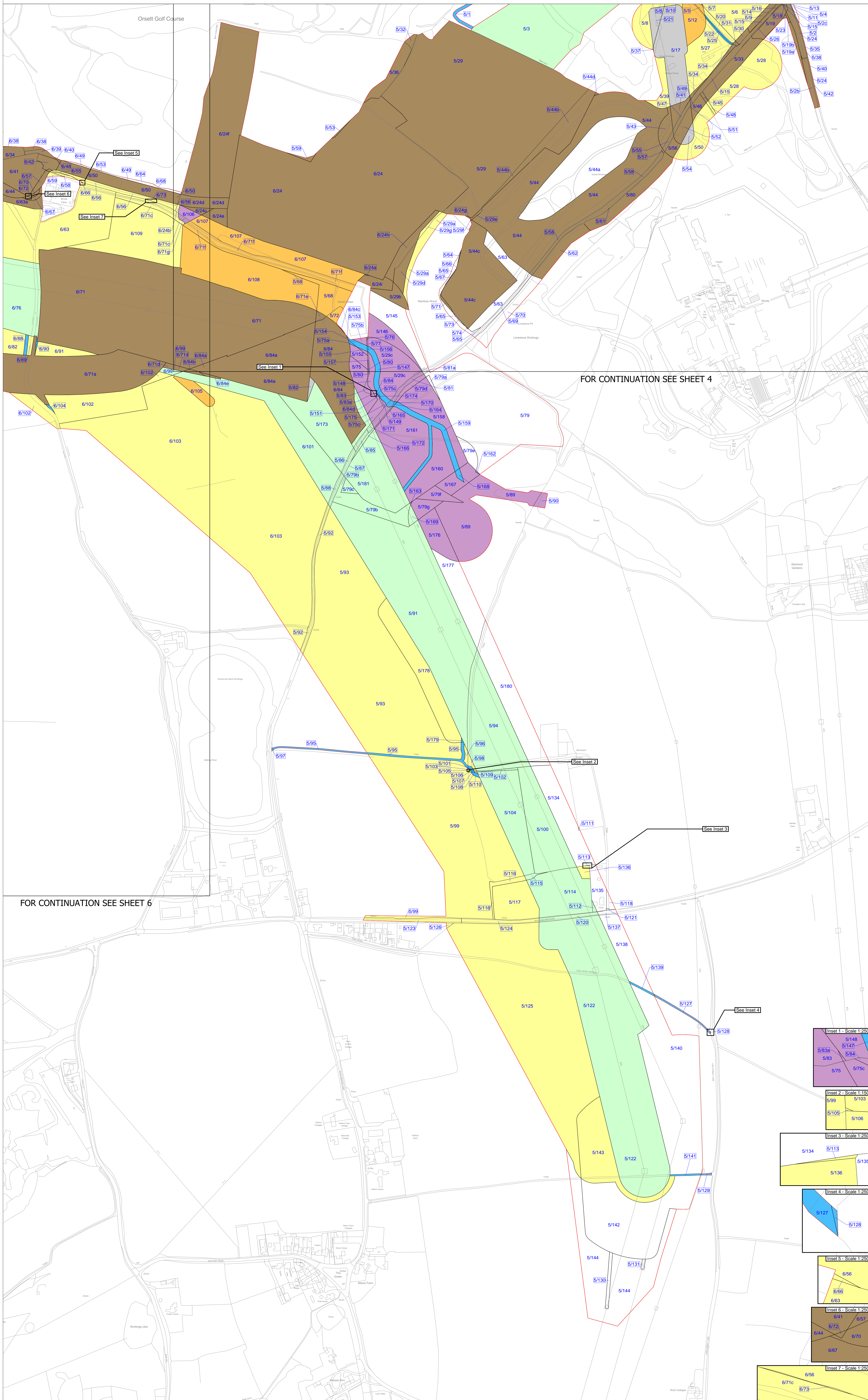
Scale	Sheet Size	Sheet	Issue
1:2,500	A0	SHEET 3 of 7	D

THE NATIONAL GRID (NORWICH TO TILBURY) ORDER
 LAND PLANS
 REGULATION 5(2)(i)-(iii)
 SECTION H (SHEET 5 OF 7,
 THURROCK COUNCIL)

Application Document 2.2



- Legend**
- Local authority boundary
 - Section boundary & local authority boundary
 - Section boundary
 - Sheet index outlines
 - Order Limits
 - Class 1 - Compulsory acquisition of land
 - Class 2 - Compulsory acquisition of rights - Overhead line
 - Class 3 - Compulsory acquisition of rights - Underground cable system
 - Class 4 - Compulsory acquisition of rights - Overhead line and underground cable system
 - Class 4A - Compulsory Acquisition of Rights - Works for the protection of existing UKOP apparatus affected by the authorised development
 - Class 5 - Compulsory acquisition of rights - Access
 - Class 6 - Compulsory acquisition of rights - Drainage
 - Class 7 - Temporary use
 - Class 8 - Land not subject to powers of acquisition nor temporary use



FOR CONTINUATION SEE SHEET 4

FOR CONTINUATION SEE SHEET 6

- Notes**
- For additional detail on the plan suites, please refer to the Guide to Plans (document reference 2.0), located in the Volume 2 of the DCO application.
 - This drawing is scaled at paper size A0, therefore any prints taken at smaller sizes will affect accuracy of the measurement units and should not be scaled against.

Coordinate System: British National Grid
 Sheet X Centroid Coordinate: 566256 Sheet Y Centroid Coordinate: 179075

BACKGROUND MAPPING INFORMATION HAS BEEN REPRODUCED FROM THE ORDINANCE SURVEY BY PERMISSION OF ORDINANCE SURVEY OF THE CONTROLLER OF HIS MAJESTY'S STATIONERY OFFICE. © CROWN COPYRIGHT AND DATABASE RIGHTS(2025) LICENCE OS100024241 AND AG0000807946.

Scale
 1:2,500

Sheet Size
 A0

Sheet
 SHEET 5 of 7

Issue
 D

Scale
 1:2,500

Sheet Size
 A0

Sheet
 SHEET 5 of 7

Issue
 D

Issue	Date	Remarks	Drawn	Checked	Approved
D	JUN-2026	For deadline five	CLJ	RCA	KPA
C	MAY-2026	For deadline four	CLJ	RCA	KPA
B	OCT-2025	October 2025 Update	KRO	AMI	CLJ
A	AUG-2025	For DCO Submission	KRO	KGA	CLJ

Title:
 THE NATIONAL GRID (NORWICH TO TILBURY) ORDER
 LAND PLANS
 REGULATION 5(2)(i)-(iii)
 SECTION H (SHEET 5 OF 7
 THURROCK COUNCIL)

nationalgrid

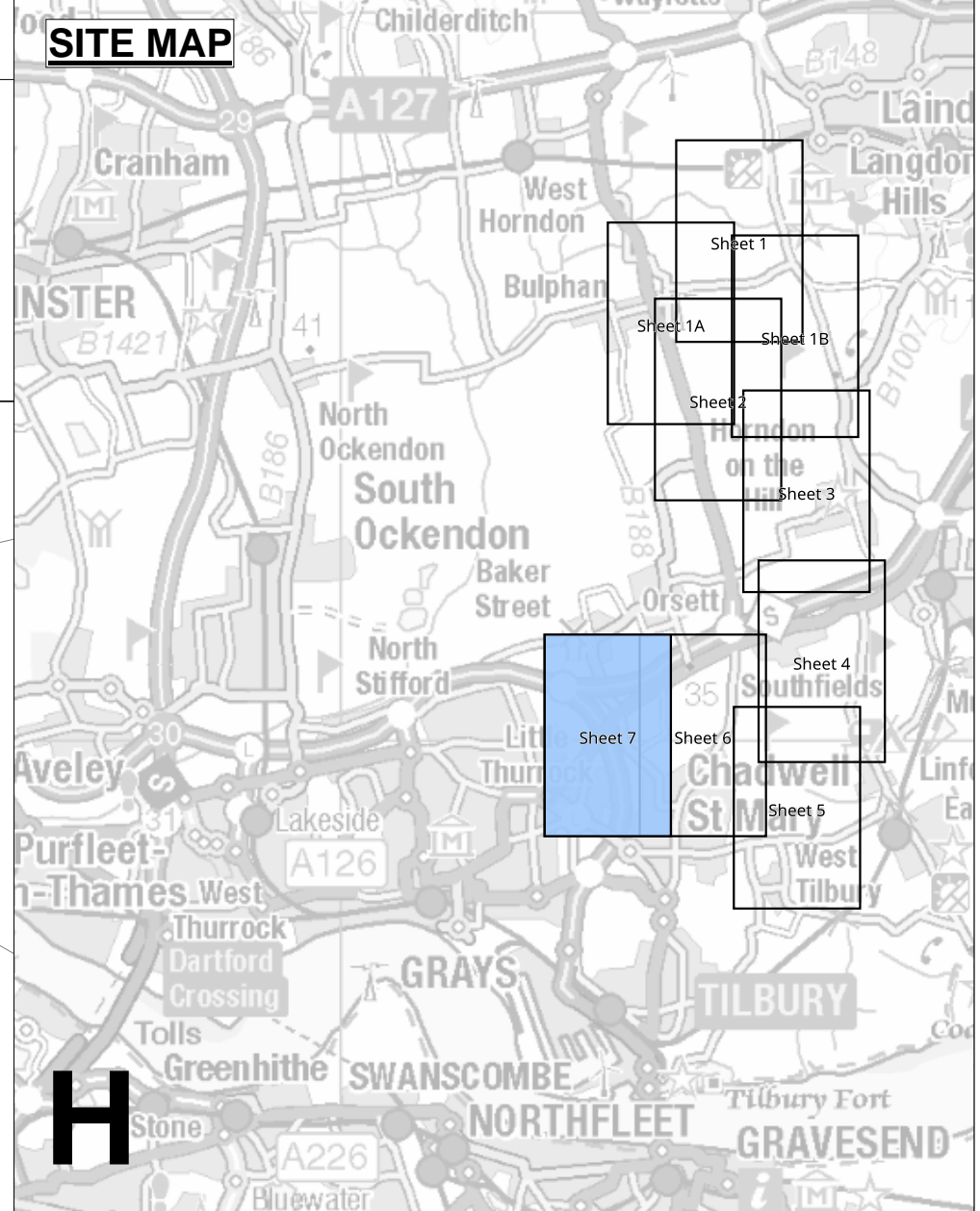
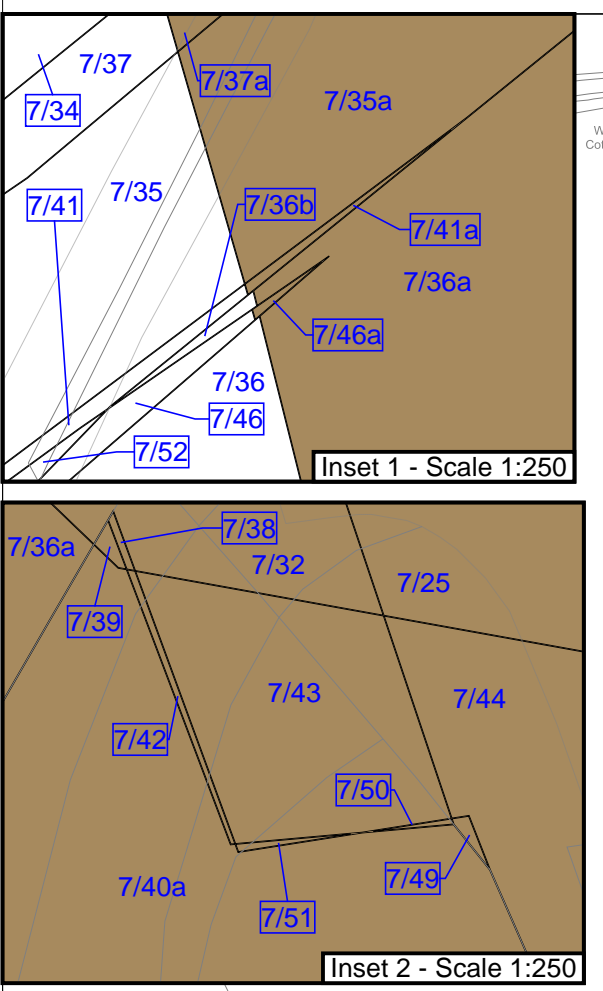
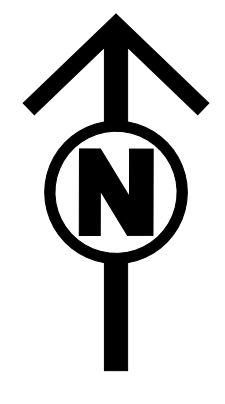
PINS Application Number
 EN020027

National Grid Drawing Reference
 AENC-TQST-LAN-DWG-0002

THE NATIONAL GRID (NORWICH TO TILBURY) ORDER
 LAND PLANS
 REGULATION 5(2)(i)-(iii)
 SECTION H (SHEET 7 OF 7,
 THURROCK COUNCIL)

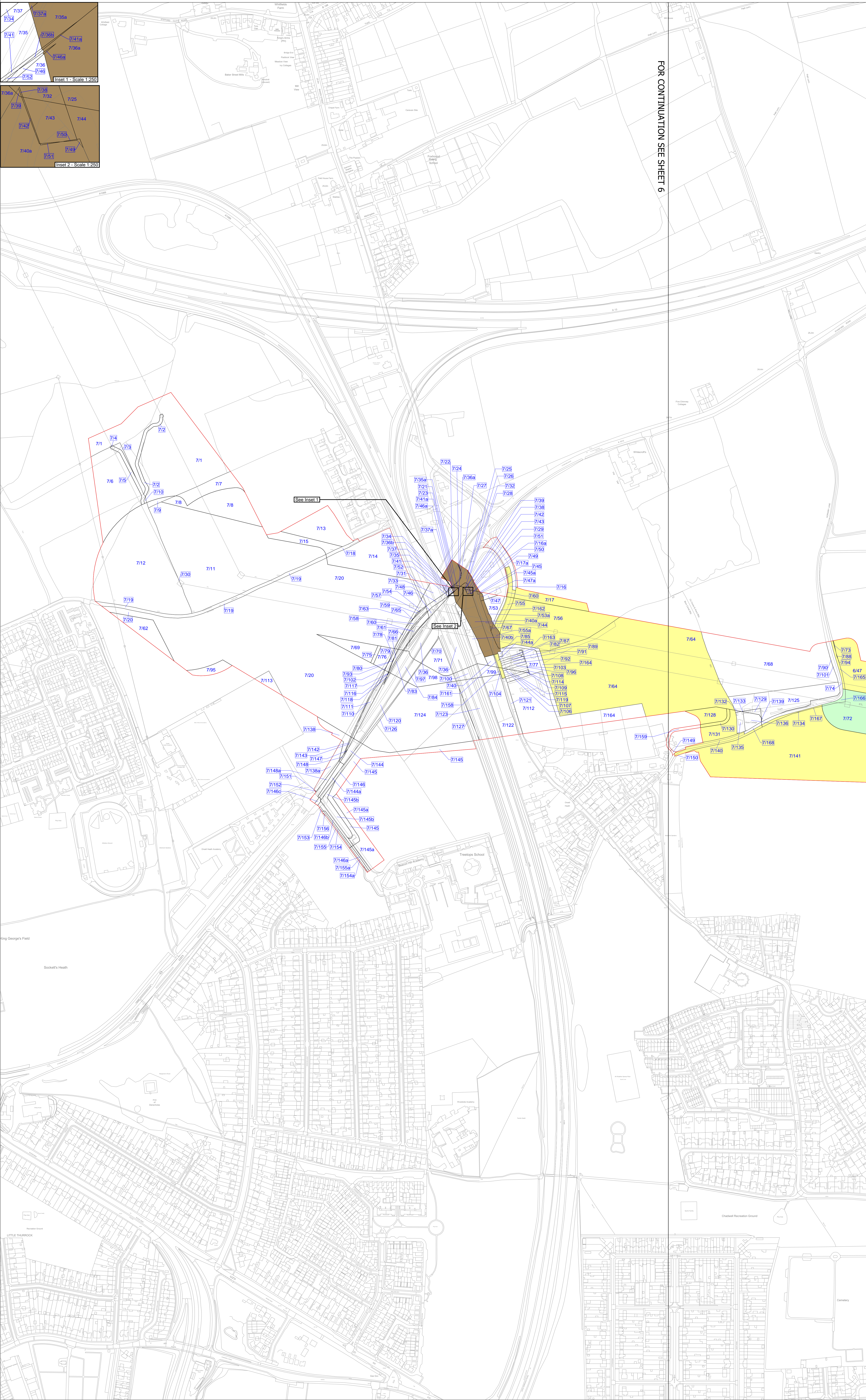
Application Document 2.2

SITE MAP



- Legend**
- Local authority boundary
 - Section boundary & local authority boundary
 - Section boundary
 - Sheet index outlines
 - Order Limits
 - Class 1 - Compulsory acquisition of land
 - Class 2 - Compulsory acquisition of rights - Overhead line
 - Class 3 - Compulsory acquisition of rights - Underground cable system
 - Class 4 - Compulsory acquisition of rights - Overhead line and underground cable system
 - Class 4A - Compulsory Acquisition of Rights - Works for the protection of existing UKOP apparatus affected by the authorised development
 - Class 5 - Compulsory acquisition of rights - Access
 - Class 6 - Compulsory acquisition of rights - Drainage
 - Class 7 - Temporary use
 - Class 8 - Land not subject to powers of acquisition nor temporary use

FOR CONTINUATION SEE SHEET 6



Notes

- For additional detail on the plan suites, please refer to the Guide to Plans (document reference 2.0), located in the Volume 2 of the DCO application.
- This drawing is scaled at paper size A0, therefore any prints taken at smaller sizes will affect accuracy of the measurement units and should not be scaled against.

Coordinate System: British National Grid
 Sheet X Centroid Coordinate: 563656 Sheet Y Centroid Coordinate: 180069

BACKGROUND MAPPING INFORMATION HAS BEEN REPRODUCED FROM THE ORDNANCE SURVEY BY PERMISSION OF ORDNANCE SURVEY OF THE CONTROLLER OF HIS MAJESTY'S STATIONERY OFFICE. © CROWN COPYRIGHT AND DATABASE RIGHTS(2025) LICENCE OS100024241 AND AG000807946.

Issue	Date	Remarks	Drawn	Checked	Approved
D	JUN-2026	For deadline five	CLJ	RCA	KPA
C	MAY-2026	For deadline four	CLJ	RCA	KPA
B	OCT-2025	October 2025 Update	BBU	AMI	CLJ
A	AUG-2025	For DCO Submission	BBU	AMI	CLJ

Title:
 THE NATIONAL GRID (NORWICH TO TILBURY) ORDER
 LAND PLANS
 REGULATION 5(2)(i)-(iii)
 SECTION H (SHEET 7 OF 7
 THURROCK COUNCIL)

nationalgrid

PINS Application Number: EN020027

National Grid Drawing Reference: AENC-TQST-LAN-DWG-0002

Scale	Sheet Size	Sheet	Issue
1:2,500	A0	SHEET 7 of 7	D

National Grid plc
National Grid House,
Warwick Technology Park,
Gallows Hill, Warwick.
CV34 6DA United Kingdom

Registered in England and Wales
No. 4031152
nationalgrid.com